

เอกสารสอบเทียบเครื่องมือที่ใช้ในการวิเคราะห์

Calibrated by Kittipong
REV.02 02/24/21

Certificate No.: C0-1808005/23

Page 3 of total 4 pages

Measurement Results (Cont.):

2. Calibration of pH Electrode (Serial No.: 3222623)

pH Standard Solution (pH)	Measured Value		Uncertainty (± pH)
	(pH)	(mV)	
4.01	4.01	180.0	0.013
7.01	7.00	4.0	0.013
10.01	10.01	-172.0	0.013

Note : Adjust Curve to Buffer Solution pH (4.7,10)
 Temperature stability of micro bath : $25 \pm 0.2^{\circ}\text{C}$

The above reported uncertainty of measurement is the expanded uncertainty obtained by multiplying the standard uncertainty with the coverage factor $k = 2.00$, providing a level of confidence approximately 95%.

ภาคผนวก ข-2

Certificate No.: C0-1808005/23

Page 4 of total 4 pages

Reference Method:

- The calibration method used was CP-096 based on an in-house method.
- The temperature scale used was an ITS-90.
- This certificate can be traceable to the national standards, which is realized the shown measurement units according to the International System of Units (SI Units).

Reference Standard Instruments:

Type	Model	Serial No.	Cert. No.	Due Date	Traceability
Thermometer Readout	1529-R	B7C853	10-0911001/22	Nov. 9, 2023	THC
Platinum Resistance Thermometer	5626	4854	C0A30047	Oct. 22, 2023	FLUKE
Liquid Bath	XORTS-40A	XO111019	10-2405001/23	May 25, 2025	THC

Remark: This certificate is traceable to the International System of Unit (SI Unit) through:

- THC, Thai Heart Calibration Co., Ltd.
- FLUKE, Fluke Corporation, U.S.A.

Measurement Results:

(X) Without Adjustment

Dimension of probe : Diameter 4 mm.		Sensor Type : RTD (PT100)	
Immersion Depth (mm.)	Standard Reading (°C)	UUC Reading (°C)	Correction (°C)
120	22.00	22.2	-0.20
120	25.00	25.2	-0.20
120	28.00	28.2	-0.20

UUC : Unit Under Calibration

The above reported uncertainty of measurement is the expanded uncertainty obtained by multiplying the standard uncertainty with the coverage factor $k = 2.00$, providing a level of confidence approximately 95%.

- End of Certificate -

Calibrated by Kitipong
 REV.02 02/24/21

FE-169

Calibrated by Pongsak
 REV.02 02/24/21

Certificate No.: MC 2307702

The Reference Standard Instrument :

Description	Certificate No.	Serial No.	Due date	Traceable thru
Data Acquisition/Switch Unit	MC 2303173	MY41010916	9 Mar 2024	MCAL
With Thermocouple Type "T" ID. No.17/1 to 17/9				

Traceability :

The measurement standard traceable to the international system of units (SI) through certificate as mentioned above

1. Calibration Procedure:

This Instrument was calibration according to TLAS G-20 by comparison with calibrated thermocouple type T under no load condition. The Thermocouples were placed on nine points and located one thermocouple in each of the eight corners of the chamber and was away from the each wall of 5 cm to 10 cm. And placed the ninth thermocouple within 2.5 cm of the geometric center of the chamber.

Temperature Uniformity - the maximum difference of measured temperatures at any sensors and the measured temperature at the reference location which are observed at the same time or at as close an observation time as possible to determine the temperature pattern or homogeneity within the chamber under steady state conditions. The reference sensor should preferably be located at the geometric center of the chamber.

Temperature Stability - one-half of the greatest maximum difference of measured temperatures at any one sensor.

Overall Variation - The Difference of the maximum and minimum measured temperatures throughout observation.

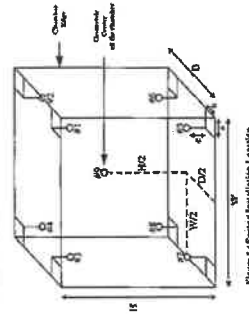


Figure 1 : Sensor Installation Location

Checked by : *Thanagorn*

Certificate of Calibration



**TEMPERATURE
CONTROLLER ENCLOSURES**

Certificate No.: MC 2307702

Page 1 of 3

Customer : Water Analysis Center Co., Ltd.
1/94 Moo 5, T.Kanham, A.U-Thai, Ayuthaya 13210.

Reference Job No. : 23-1577 **Received Date** : 11 July 2023
Description : Refrigerator
Manufacturer : SANDEN INTERCOOL **Model** : SEC-1500SBD
Serial No. : SEC1500201A-0708-00304 **ID. No.** : WWL0038
Marking : Additionally for the purpose of identification by this laboratory a label marked with this certificate number (MC 2307702) has been attached to the case.
Method : In-House calibration procedure MWI-T-033 this method is reference to TLAS G-20 "Temperature Controlled Enclosures".

Location of Calibration : Water Analysis Center Co., Ltd. ; Laboratory.
Environmental Conditions : Ambient Temperature : (25.3 to 25.9) °C

Date of Calibration : 11 July 2023 **Date of Issue** : 12 July 2023
Relative Humidity : (65.2 to 67.9) %

Checked by : *Thanagorn* **Approved by :** *Aitipong*
Thanagorn Limchacharoen Aitipong Kanjanawasit
(Calibration Supervisor) (Technical Manager)

The uncertainties are for a confidence probability of approximately 95%

This certificate is issued in accordance with the conditions of accreditation granted by the National Standardization Council of Thailand-Office of the National Standardization Council that has assessed the measurement capability of the laboratory and its traceability to recognized national standards and to the units of measurement realized at the corresponding national standards laboratory. This certificate may not be reproduced other than in full except with the prior written approval of Master Calibration Co.,Ltd.

Certificate No.: MC 2307702

Page 3 of 3

2. Result of calibration :

Temperature Measurement Accuracy Test

Indicating Temperature (°C)	Measured Temperature (°C) at Spread Locations									Uncertainty (±°C)
	#1	#2	#3	#4	#5	#6	#7	#8	Ref. #9	
2.5	4.4	4.2	4.2	4.2	4.0	3.9	4.1	4.0	3.8	0.86

Chamber Characterization Result

Controller Temperature (°C)	Indicating Temperature (°C)	Temperature Stability (±°C)	Temperature Uniformity (°C)	Overall Variation (°C)
2.0	2.5	1.50	1.01	3.3

The reported uncertainty of measurement was based on a standard uncertainty multiplied by a coverage factor $k = 2$, providing a level of confidence of approximately 95 %.

This certificate will certify of the calibrated equipment only.

End of Certificate

Checked by: *Thanyin*

[MCF-Q-077, Rev.6 ; Date : 22/04/2021]



THAI HEART CALIBRATION CO., LTD.
102/15000 P. Road, 10th Floor, Samsuk, Bangkok 10310
Tel : (02) 274 2978-9, (02) 274 2987-8 Fax : (02) 274 2318, (02) 274 2989
Website : www.thaiheartcalibration.com E-mail : calibrate@thaiheartcalibration.com



CERTIFICATE OF CALIBRATION

Page 1 of total 2 pages

Certificate No.: C0-1907007/23

Customer
WATER ANALYSIS CENTER CO., LTD.
1/94 Moo 5, T.Kanham,
A.U-thai, Ayuthaya 13210

Equipment Conductivity Meter
Manufacturer EUTECH
Serial No. 2657889
Description -
Model CON 2700
ID No. WWL 0136

Environmental Conditions
Ambient Temperature: (20 ± 2) °C
Relative Humidity: (50 ± 10) %
Atmospheric Pressure: -

Calibration Location
Jayhawks Laboratory (CL&GL)

Received Date
19 July 2023

Calibration Date
19 July 2023

Date of Issue
20 July 2023

Condition of Artifacts
Used conditions but can be calibrated

Checked by *[Signature]* **Approved by** *[Signature]*

Act as Technical Manager

Representative of Managing Director

(Dr. Ekachai Putitwong)

() (Krisyosi K.) () (Sakda Y.)

() (Paliphan K.) () (Onnapa P.)

() (Pongsak H.) () (Nitiphong K.)

() (Kanung C.) () (Nonthachai K.)

() (Pramong P.) () (Noppol P.)

This calibration certificate shall not be reproduced other than in full except with the prior written approval of the Thai Heart Calibration Co., Ltd.

FE-169

REV.02 02/24/21



SV 201005/2024

Certificate No.: C0-1907007/23

Page 2 of total 2 pages

Reference Method:

- The calibration method used was CH-177 based on an in-house method.
- This certificate can be traceable to the national standards, which is realized the shown measurement units according to the International System of Units (SI Units).

Reference Standard :

Material	Batch Value	Lot Number	Due Date	Traceability
Conductivity Standard Solution	147.8 $\mu\text{S/cm}$	S220611005	Dec. 6, 2023	SCP Science
	1.425 mS/cm	S220812006	May 31, 2024	

Remark: This certificate is traceable to the International System of Unit (SI Unit) through:

- SCP Science.

Measurement Results: (Probe Serial No.: 93X219065)

Conductivity Standard Solution	Measured Value	Correction	Uncertainty (\pm)
147.8 $\mu\text{S/cm}$	147.5 $\mu\text{S/cm}$	0.3 $\mu\text{S/cm}$	2.5 $\mu\text{S/cm}$
1.425 mS/cm	1.427 mS/cm	-0.002 mS/cm	0.0051 mS/cm

Note: Adjustment points: 147.8 $\mu\text{S/cm}$ 1.425mS/cm

The above reported uncertainty of measurement is the expanded uncertainty obtained by multiplying the standard uncertainty with the coverage factor $k = 2.00$, providing a level of confidence approximately 95%.

- End of Certificate -

Calibrated by Onnapa
REV.02 02/24/21

CERTIFICATE OF CALIBRATION

Instrument : DO Meter
Model : DO-31P
Serial No. : 780065
Manufacturer : TOA-DKK
Measuring Range : 0.00 ~ 20.00 mg/l

Machine : -
Location : -

Customer : Water Analysis Center Co.,Ltd.
1/94 Moo.5 T.Kanham, A.U-Thal
Ayutthaya 13210 Thailand

Date Of Received : 11/01/2024
Date Of Calibration : 11/01/2024

Ambient Condition : Temperature 26 $^{\circ}\text{C}$
Humidity 58 % RH

Calibrated By : P. Yooyen

(Ms. Phanee Yooyen)
Technician

Approved By : N. Nipon Phungsomsak

(Mr. Nipon Phungsomsak)
Technical Manager

Date Of Issue : 15/01/2024

This Certificate may not be reproduced other than in full, except with the prior written approval of the head of the industrial instruments calibration center.

Instrument : DO Meter
Model : DO-31P
Serial No. : 780065

Calibrate Procedure

- ☐ This instrument was calibrated by comparison with standard solution (PH/ORP)
- ☐ This instrument was calibrated by comparison with scattering plate value (Turbidity)
- ☐ This instrument was calibrated by comparison with conductivity (Conductivity)
- ☒ This instrument was calibrated by comparison with Sodium sulfite anhydrous (DO)

Condition of this result of calibration

1). Reference Standard Solution

Standard	Lot No	Batch	Cert. No.	Due Date
Sodium Sulfite Power	408K1405	-	-	-

2). Traceability This certification is traceable to

- ☒ Kanto Chemical Co., INC.
- ☐ DKK Corporation

Result Of Calibration

Standard Solution (mg/l) at 25.7°C	Before Adjust		After Adjust	
	Indicator	Error	Indicator	Error
Zero	0.00	+0.10	0.00	-
Span	8.02	-1.57	8.02	-

DO Electrode No. OE270AA(5) S/N 111F0029

Calibrated By P. Yooyen
(Ms. Phance Yooyen)
Technician



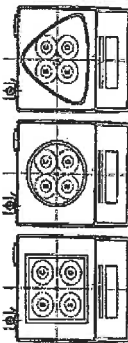
Certificate No.: C01241754

Page: 2 of 2

Calibration Results:

Without Adjustment

Excentric Error: Weight to be 1/3 or 1/2 of Maximum capacity, taken from the center of the pan as a zero reference.



Nominal Test Value	Reference Points (g)				
	A	B	C	D	E
-	0.0000	0.0001	0.0000	0.0000	-0.0002

Repeatability: Determination of the standard deviation of weighing balance., Repeatability 0.0001 (g)

Nominal test value (g)	Standard Deviation
20	0.00004
200	0.00006

Error of indication from nominal or conventional mass value., Repeatability 0.0001 (g)

Nominal Value (g)	Conventional Mass (g)	Displayed Value (g)	Error of indication (g)	Uncertainty (g)	k
1	1.00001	1.0000	0.0000	0.00011	2.04
2	2.00002	2.0000	0.0000	0.00011	2.04
5	5.00002	5.0000	0.0000	0.00011	2.04
10	10.00001	10.0000	0.0000	0.00011	2.04
20	20.00001	20.0000	0.0000	0.00012	2.03
50	50.00003	50.0000	0.0000	0.00013	2.02
70	70.00004	70.0000	0.0000	0.00016	2.01
100	99.99996	100.0001	0.0001	0.00017	2.01
120	119.99987	120.0002	0.0002	0.00021	2.00
150	149.99989	150.0002	0.0002	0.00024	2.00
200	199.99986	200.0004	0.0004	0.00030	2.00

The End of Certificate

DKSH Technology (Thailand) Co., Ltd.
2023 Europe's Innovation Award for Performance 1000
Phone: +66 2639 7000 Email: thailand@dksh.com Website: www.dksh.com/thailand

Delivering Growth - In Asia and Beyond.

CAL-FM-C01-14-12 Sep 2022



Master Calibration Co., Ltd.

547 Soi Ratchadapin, Kwang Sunsumok, Khet Huaykwang, Bangkok 10310

Tel.: (02) 274 2978-9, (02) 2742987-8 Fax: (02) 274 2518, (02) 274 2989

Website: www.mastercalibration.com E-mail: calibrate@mastercalibration.com

Certificate of Calibration

LIQUID BATH



Page 1 of 3



Certificate No.: MC 2314268

Customer : Water Analysis Center Co., Ltd.
1/94 Moo 5, T.Kantham, A.U-Thai, Ayutthaya 13210.

Reference Job No. : 23-2833 Received Date : 15 December 2023
Description : Water Bath
Manufacturer : ESSTELL Model : EWB-122D
Serial No. : 20180508122 ID. No. : WWL 0214
Marking : Additionally for the purpose of identification by this laboratory a label marked with this certificate number (MC 2314268) has been attached to the case.
Method : In-House calibration procedure MWI-T-029 this method is reference to ASTM E715 "Liquid Bath".

Location of Calibration : Water Analysis Center Co., Ltd. ; Laboratory.
Environmental Condition : Ambient Temperature : (29.4 to 29.8) °C
Relative Humidity : (49.0 to 52.0) %

Date of Calibration : 15 December 2023 Date of Issue : 19 December 2023

Checked by : Chalermkit Rakphada (Calibration Engineer)
Approved by : Aittipong Kanjanasit (Technical Manager)

The uncertainties are for a confidence probability of approximately 95%

This certificate is issued in accordance with the conditions of accreditation granted by the National Standardization Council of Thailand-Office of the National Standardization Council that has assessed the measurement capability of the laboratory and its traceability to recognized national standards and to the units of measurement realized at the corresponding national standards laboratory. This certificate may not be reproduced other than in full except with the prior written approval of Master Calibration Co., Ltd.

[MCF-Q-077 ; Rev.6 ; Date : 22/04/2021]

Certificate No.: MC 2314268

Page 2 of 3

Reference Standard Instrument :

Description	Certificate No.	Serial No.	Due date	Traceable thru
Data Acquisition/Switch Unit	MC 2301270	MY44020009	9 Mar 2024	MICAL
With Thermocouple Type " T " ID. No.27/1 to 27/5				

Traceability :

The measurement standard traceable to the international system of units (SI) through certificate as mentioned above

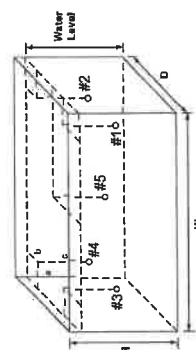
1. Calibration Procedure:

This Instrument was calibration according to ASTM E715 - 2007 by comparison with calibrated sensor under no load condition. The sensor were placed on five points and located one sensor in each of the eight corners of the chamber and was away from the each wall of 5 cm to 10 cm. And placed the five sensor within 2.5 cm of the geometric center of the chamber.

Temperature Uniformity - the maximum difference of measured temperatures at any sensors and the measured temperature at the reference location which are observed at the same time or at as close an observation time as possible to determine the temperature pattern or homogeneity within the chamber under steady state conditions. The reference sensor should preferably be located at the geometric center of the chamber.

Temperature Stability - one-half of the greatest maximum difference of measured temperatures at any one sensor.

Overall Variation - The Difference of the maximum and minimum measured temperatures throughout observation.



- Overall Ambient Temperature around the Chamber variation : 1.3 °C
- Overall Line Voltage variation : 0.0 V
- Chamber Size (W*H*D) : 50 cm x 12 cm x 30 cm
- Water Level : 7 cm

Checked by :

Chalermkai

[MCF-Q-077 ; Rev.6 ; Date : 22/04/2021]

Certificate No.: MC 2314268

Page 3 of 3

2. Result of calibration :

Temperature Measurement Accuracy Test

Indicating Temperature (°C)	Measured Temperature (°C) at Spread Locations					Uncertainty (±°C)
	#1	#2	#3	#4	Ref. #5	
45.0	44.5	44.4	44.5	44.5	44.6	0.45

Chamber Characterization Result

Desired Temperature (°C)	Controller Temperature (°C)	Indicating Temperature (°C)	Temperature Stability (±°C)	Temperature Uniformity (°C)	Overall Variation (°C)
44.5	45.0	45.0	0.62	0.88	1.5

The reported uncertainty of measurement was based on a standard uncertainty multiplied by a coverage factor $k = 2.0$, providing a level of confidence of approximately 95 %.

This certificate will certify of the calibrated equipment only.

End of Certificate

Checked by :

Chalermkai

[MCF-Q-077 ; Rev.6 ; Date : 22/04/2021]

Certificate No.: MC 2314270

Reference Standard Instrument :

Description : Certificate No. : Serial No. : Due date : Traceable thru :
Data Acquisition/Switch Unit : MC 2214032 : MY41029992 : 26 Dec 2023 : MCAL
With Thermocouple Type " T " ID. No.31/1 to 31/9

Traceability :

The measurement standard traceable to the international system of units (SI) through certificate as mentioned above

1. Calibration Procedure:

This instrument was calibration according to TLAS G-20 by comparison with calibrated thermocouple type T under no load condition. The Thermocouples were placed on nine points and located one thermocouple in each of the eight corners of the chamber and was away from the each wall of 5 cm to 10 cm. And placed the ninth thermocouple within 2.5 cm of the geometric center of the chamber.

Temperature Uniformity - the maximum difference of measured temperatures at any sensors and the measured temperature at the reference location which are observed at the same time or at as close an observation time as possible to determine the temperature pattern or homogeneity within the chamber under steady state conditions. The reference sensor should preferably be located at the geometric center of the chamber.
Temperature Stability - one-half of the greatest maximum difference of measured temperatures at any one sensor.

Overall Variation - The Difference of the maximum and minimum measured temperatures throughout observation.

Overall Ambient Temperature around the Chamber variation : 0.4 °C
Overall Line Voltage variation : 0.0 V
Chamber Size (W*H*D) : 65 cm x 80 cm x 50 cm

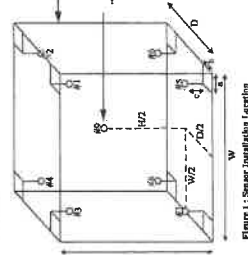


Figure 1 : Sensor installation location

Checked by : Chalermkitt

Certificate of Calibration

**TEMPERATURE
CONTROLLER ENCLOSURES**



ISO 17025
CALIBRATION 0183

Certificate No.: MC 2314270

Customer : Water Analysis Center Co., Ltd.
1/94 Moo 5, T. Kantham, A.U.-Thai, Ayutthaya 13210.

Reference Job No. : 23-2833 Received Date : 15 December 2023
Description : Incubator
Manufacturer : Memmert Model : IN260
Serial No. : D619.0170 ID. No. : WWL 0192
Marking : Additionally for the purpose of identification by this laboratory a label marked with this certificate number (MC 2314270) has been attached to the case.
Method : In-House calibration procedure MWI-T-033 this method is reference to TLAS G-20 "Temperature Controlled Enclosures".
Location of Calibration : Water Analysis Center Co., Ltd. ; Laboratory.
Environmental Conditions : Ambient Temperature : (25.2 to 25.6) °C
Relative Humidity : (65.4 to 66.2) %
Date of Calibration : 15 December 2023 Date of Issue : 19 December 2023

Checked by : Chalermkitt
Chalermkitt Rakphada
(Calibration Engineer)
Approved by : Aittipong
Aittipong Kajjantawat
(Technical Manager)

The uncertainties are for a confidence probability of approximately 95%

This certificate is issued in accordance with the conditions of accreditation granted by the National Standardization Council of Thailand-Office of the National Standardization Council that has assessed the measurement capability of the laboratory and its traceability to recognized national standards and to the units of measurement realized at the corresponding national standards laboratory. This certificate may not be reproduced other than in full except with the prior written approval of Master Calibration Co., Ltd.

Certificate No.: MC 2314270

Page 3 of 3

2. Result of calibration :

Temperature Measurement Accuracy Test

Indicating Temperature (°C)	Measured Temperature (°C) at Spread Locations									Uncertainty (±°C)
	#1	#2	#3	#4	#5	#6	#7	#8	Ref. #9	
35.0	35.2	35.2	35.2	35.2	35.1	35.1	35.0	35.1	35.1	0.44

Chamber Characterization Result

Desired Temperature (°C)	Controller Temperature (°C)	Indicating Temperature (°C)	Temperature Stability (±°C)	Temperature Uniformity (°C)	Overall Variation (°C)
35.0	35.0	35.0	0.13	0.21	0.4

The reported uncertainty of measurement was based on a standard uncertainty multiplied by a coverage factor $k = 2$, providing a level of confidence of approximately 95 %.

This certificate will certify of the calibrated equipment only.

End of Certificate

Checked by :

Chalermit

